



Glendale Sustainability Commission

Water Sustainability Report

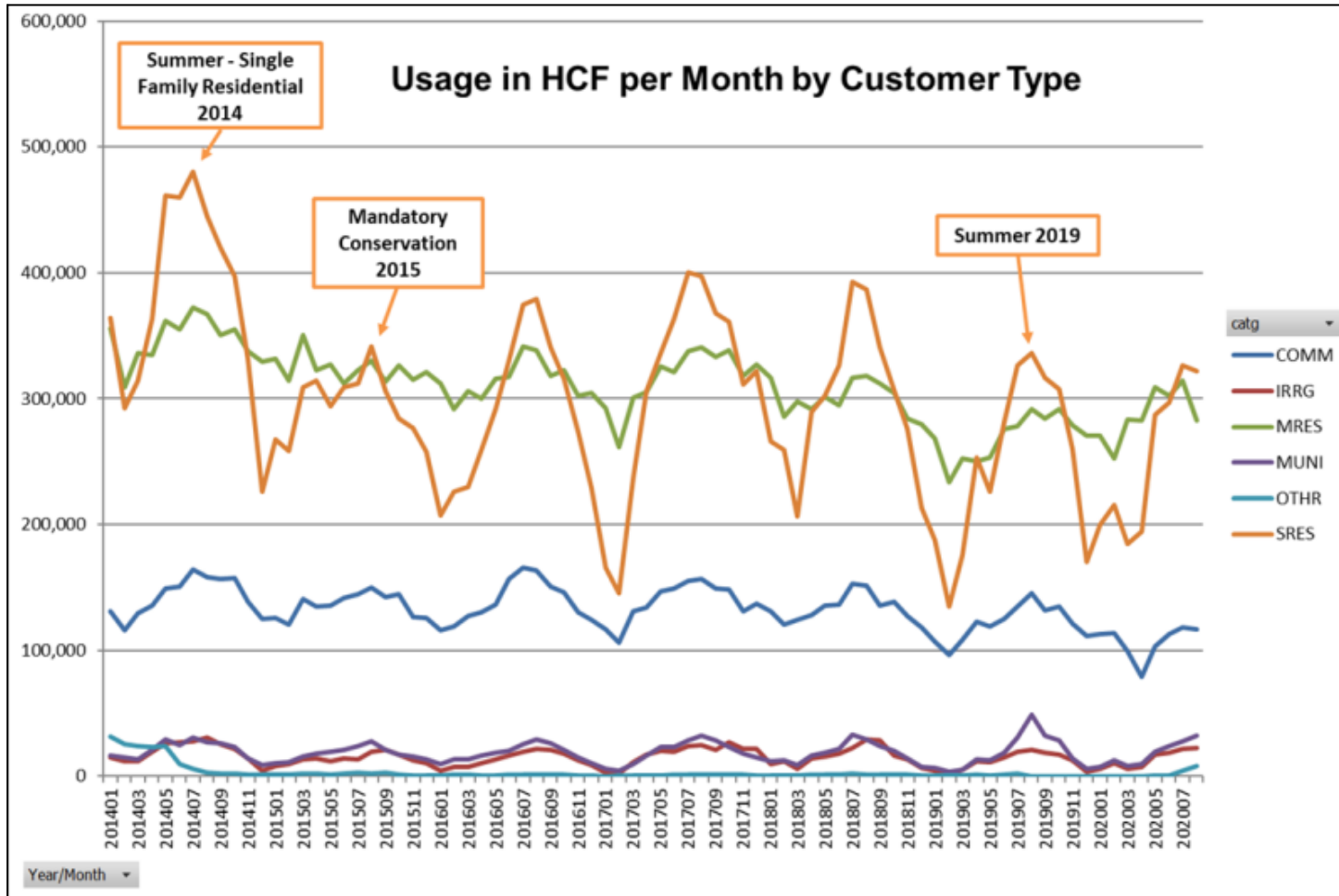
August 5th, 2021

Shared Responsibilities



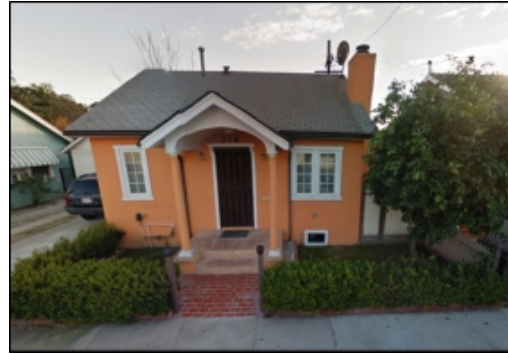
- Customers
 - Businesses
 - Residents
- The City
 - Codes
 - Code Enforcement
 - other Departments
- GWP

Types of Use



- 77% Residential
 - 39% Multifamily
 - 38% Single Family
- Summer Use
 - MFR Increases by 12%
 - SFR Increases by 70%
- Number of Units
 - 48,900 MFR Units
 - 22,100 SFR Units
- 3,300 Units Added, with 18% reduction in use

Example Use



Lower Water Usage Example

	Jan-13	Feb-13	Mar-13	Apr-13	May-13	Jun-13	Jul-13	Aug-13	Sep-13	Oct-13	Nov-13	Dec-13
Total HCF	3	3	5	5	6	5	5	5	4	2	3	5
Total Gallons Per Month	2,244	2,244	3,740	3,740	4,488	3,740	3,740	3,740	2,992	1,496	2,244	3,740



Higher Water Usage Example

	Jan-13	Feb-13	Mar-13	Apr-13	May-13	Jun-13	Jul-13	Aug-13	Sep-13	Oct-13	Nov-13	Dec-13
Total HCF	48	62	70	80	81	79	87	51	84	78	73	69
Total Gallons Per Month	35,904	46,376	52,360	59,840	60,588	59,092	65,076	38,148	62,832	58,344	54,604	51,612

Codes and Enforcement



- Model Water Efficient Landscape Ordinance (MWELO)
- Glendale's Zoning Ordinances – for 5,000 sqft projects
- For City Compliance - ORWU (supplier level)
$$= (ET_o - P_{eff}) * (0.62) * ETF * LAs$$
 - ORWU = Outdoor Residential Water Use (gallons)
 - ET_o = Reference evapotranspiration (inches)
 - P_{eff} = Effective precipitation (inches)
 - ETF = Supplier level ET factor (unitless)
 - LAs = Residential landscape area for a water supplier (sq. ft)
 - 0.62 = Unit conversion factor

City Facilities



GWP Water Conservation Programs

Important COVID-19 Updates:

For the most current information, please click here.



[Our City](#)

[Government](#)

[Residents](#)

[- GLENDALE WATER AND POWER](#)

[COVID-19 Response](#)

[Residential Customers](#)

[Business Customers](#)

[About Your Water](#)

[Solar Education](#)

[Energy Storage](#)

[Electric Vehicles](#)

[Electric Service Requirements](#)

[Rates](#)

[Projects](#)

[Safety & Security](#)

[Reports / Plans](#)

[About Us](#)

[Government](#) » [Departments](#) » [Glendale Water and Power](#) » [Residential Customers](#) »

Residential Programs & Rebates

Font Size:

[Back on Track Program](#)

Provides matching bill assistance to customers who have an unpaid balance more than 12 months. Bill assistance would be equal to 50% of outstanding balance for residential customers that meet certain income eligibility guidelines.

[GWP Peak Savings Program](#)

The Peak Savings program uses your existing smart thermostat to automatically manage your home's energy usage by up to 3 degrees – helping to reduce demand on the electric grid.

Receive \$50 for enrolling, and \$50 every year on your enrollment anniversary.

[Smart Home Upgrade Program](#)

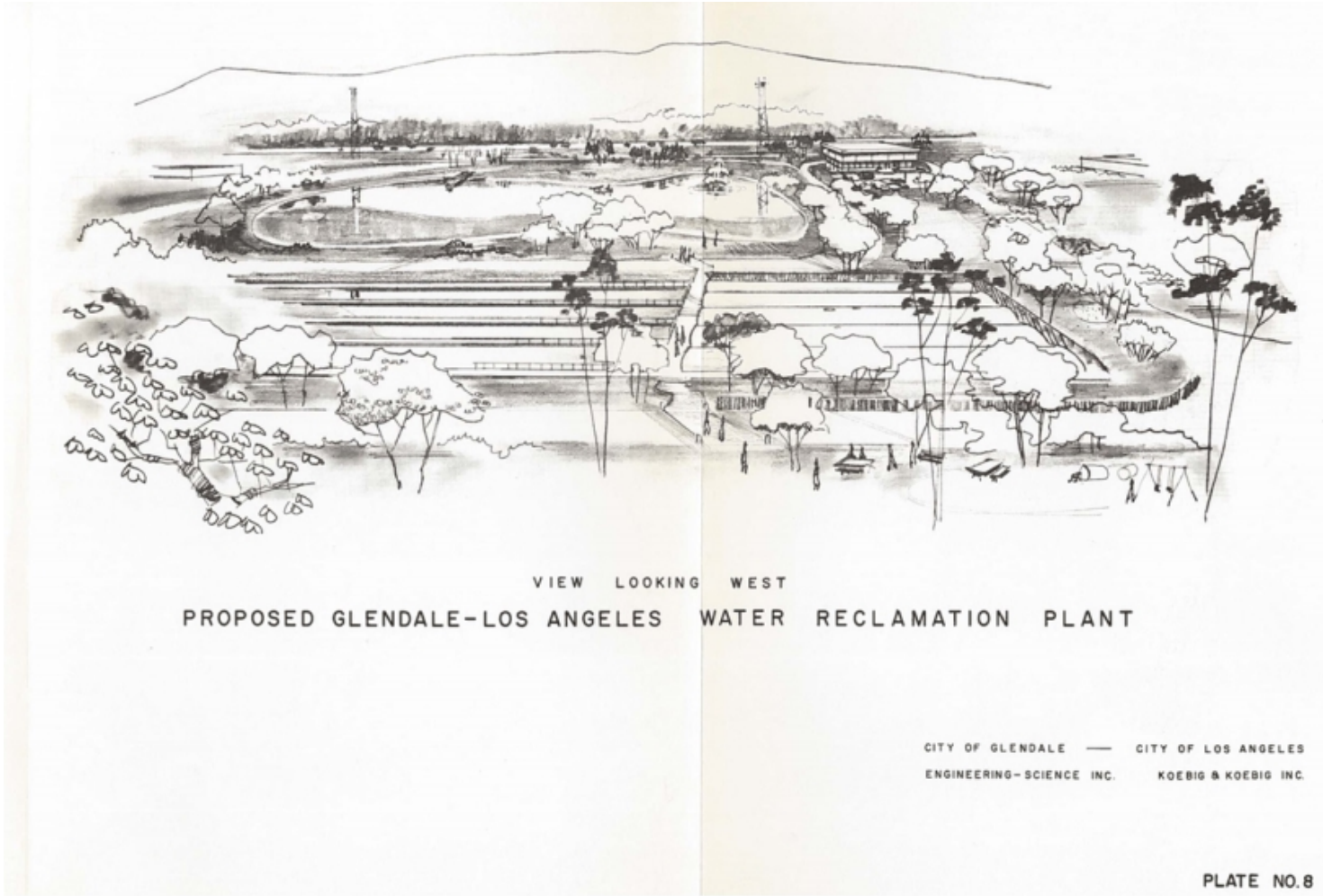
Free energy and water saving upgrades for residential homes.

- Turf Removal Rebates - \$2 per square foot
- \$500 rebate after installing a non-permit gray-water system
- Smart Home Upgrades - Faucet aerators, Shower heads, Sprinkler head replacements, Irrigation controller programming
- WaterInsight – Home Water Reports with e-mail alerts for potential leaks
- Clothes Washer - \$80 rebate
- Dishwasher - \$40 rebate
- High Efficiency Toilet - \$125 rebate

GlendaleCA.GOV – Glendale Water & Power



Early Adopter of Sustainable Practices



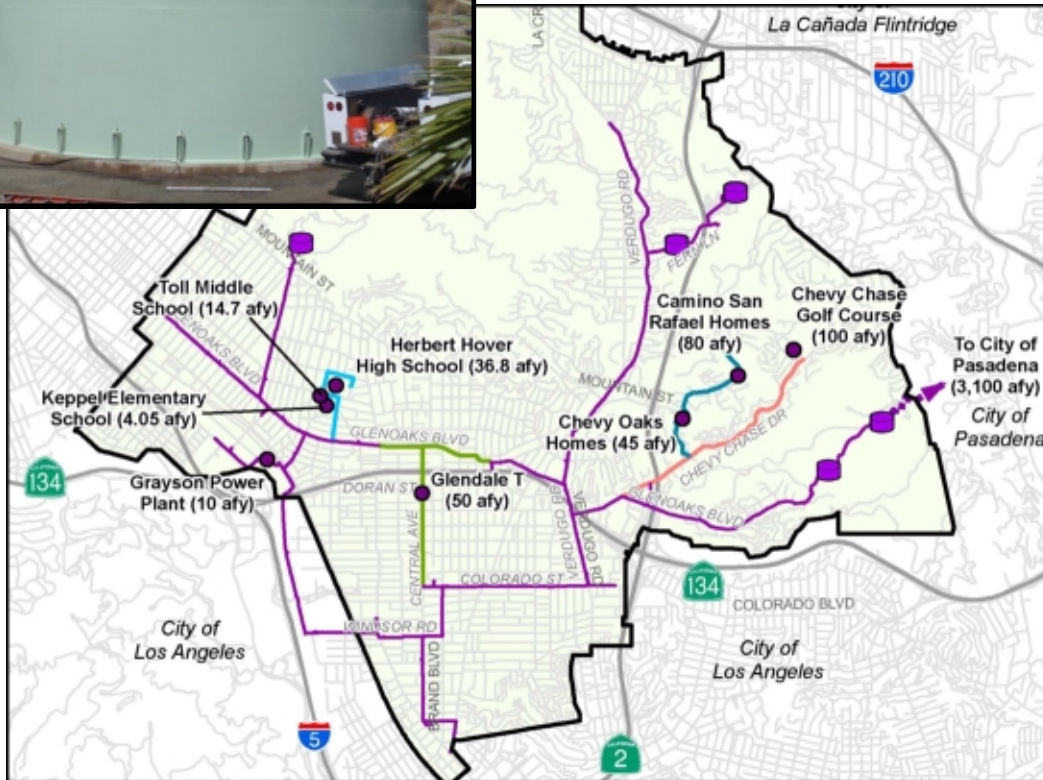
- Cooperation between the Cities of Glendale and Los Angeles began in 1968 for regional reclamation facilities.
- Cooperation continued with completion of the Glendale-LADWP Bette Davis Project to extend Glendale's recycled water system to serve portions of Griffith Park in 2015.

Pioneers In Recycling



- 1976: City of Glendale is a co-owner of the new LA – Glendale Water Reclamation Plant
- 1978: First recycled water use in the City
- 1992: The “Forest Lawn Project” was the first of several recycled system expansion projects
- 1992-2014: Glendale invested over \$20.3 million in expansions
- 2020: Over 7% of Glendale’s water demand is supplied by local recycled water

Recycled System



- Approximately 21 miles of recycled water mains
- 6 RW pump stations
- 5 RW storage tanks
- 78 recycled water meters
- Uses include irrigation, cooling, dual-plumbing, dust control

Water Energy Nexus



- James Rez Energy Recovery Generators, installed in the late 1980's.
- Since 2008 GWP's Water Division has generated nearly 4 million KWH of clean hydro-power from its facility.
- The electricity generated at this facility is used to offset the energy needed to pump water to GWP's customers.
- Water weighs 8.34 lb/gallon and GWP lifts nearly 41 tons of water to an average household every month.

Q&A



**TO SUPPORT
~~CONSERVATION~~
SUSTAINABILITY
WE USE RECYCLED
WATER FOR
IRRIGATION**



DO NOT DRINK



**Less water
doesn't
mean less
lovely.**

Make your garden a beautiful California friendly garden with drought tolerant plants.



Every drop counts, let's do everything we can.



#MyGlendale